



Marine Institute Vessel Activity 2011

RV. Celtic Voyager 31.5m

8 Scientific berths
Delivered 1997

- Successful delivery of 281 scientific days in 2011

- 75 days of "Infomar" bathymetric surveys using EM3002D shallow water multi-beam completed

- 2 Week commercial geo-hazard survey completed for Irish Oil Company



"Holland I" ROV

- 3000m rated
- 100hp Hydraulic power
- 2 x 7 f, 1 X 5 F manipulators
- In service since Jan 2009

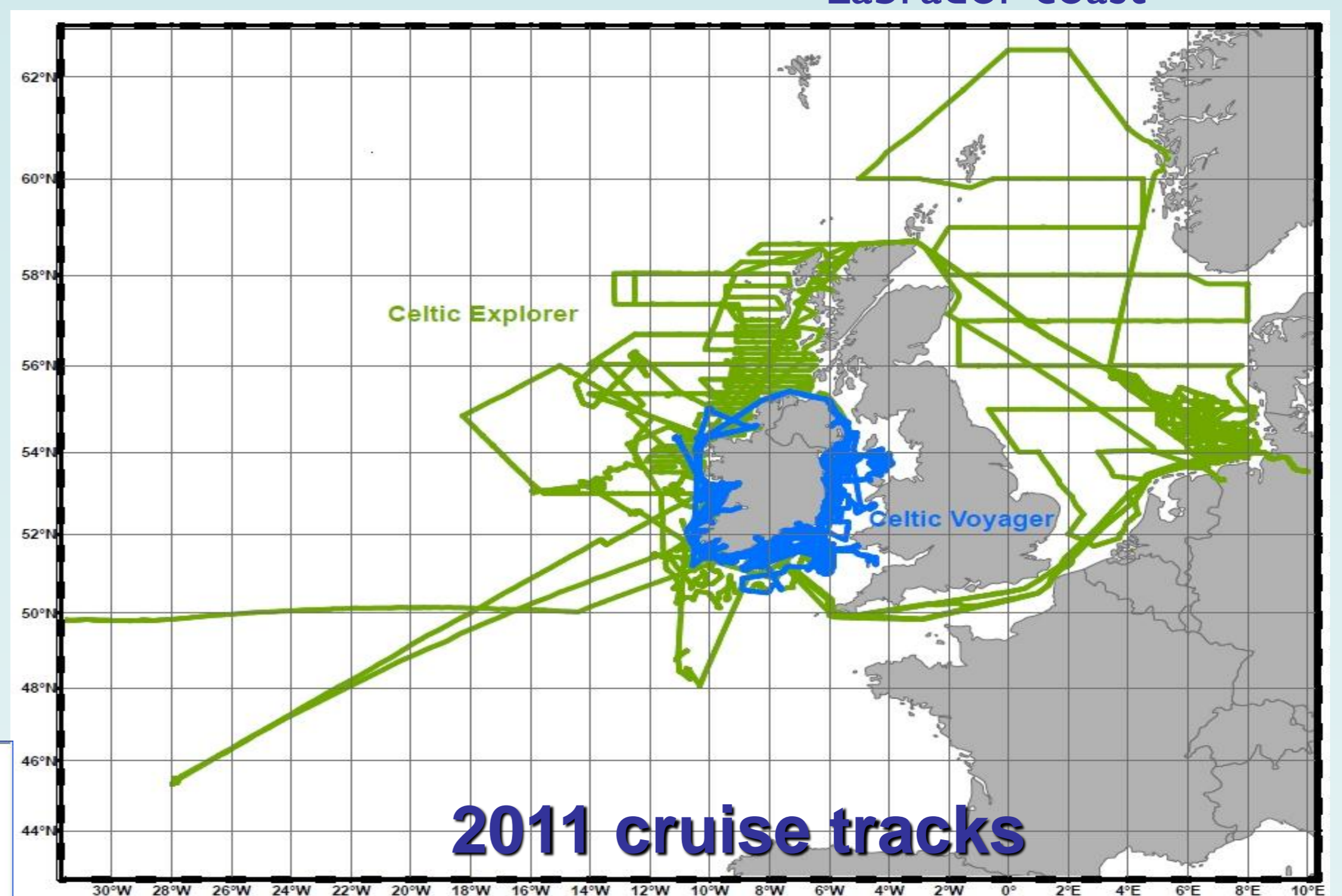
Celtic Explorer 65m

21 Scientific berths
Delivered 2002

- Successful delivery of schedule for CE, total of 307 scientific days completed in 2011

- 2 "Holland I" ROV surveys completed including successful trip which located hydrothermal vent field North of the Azores in 3000m water depth

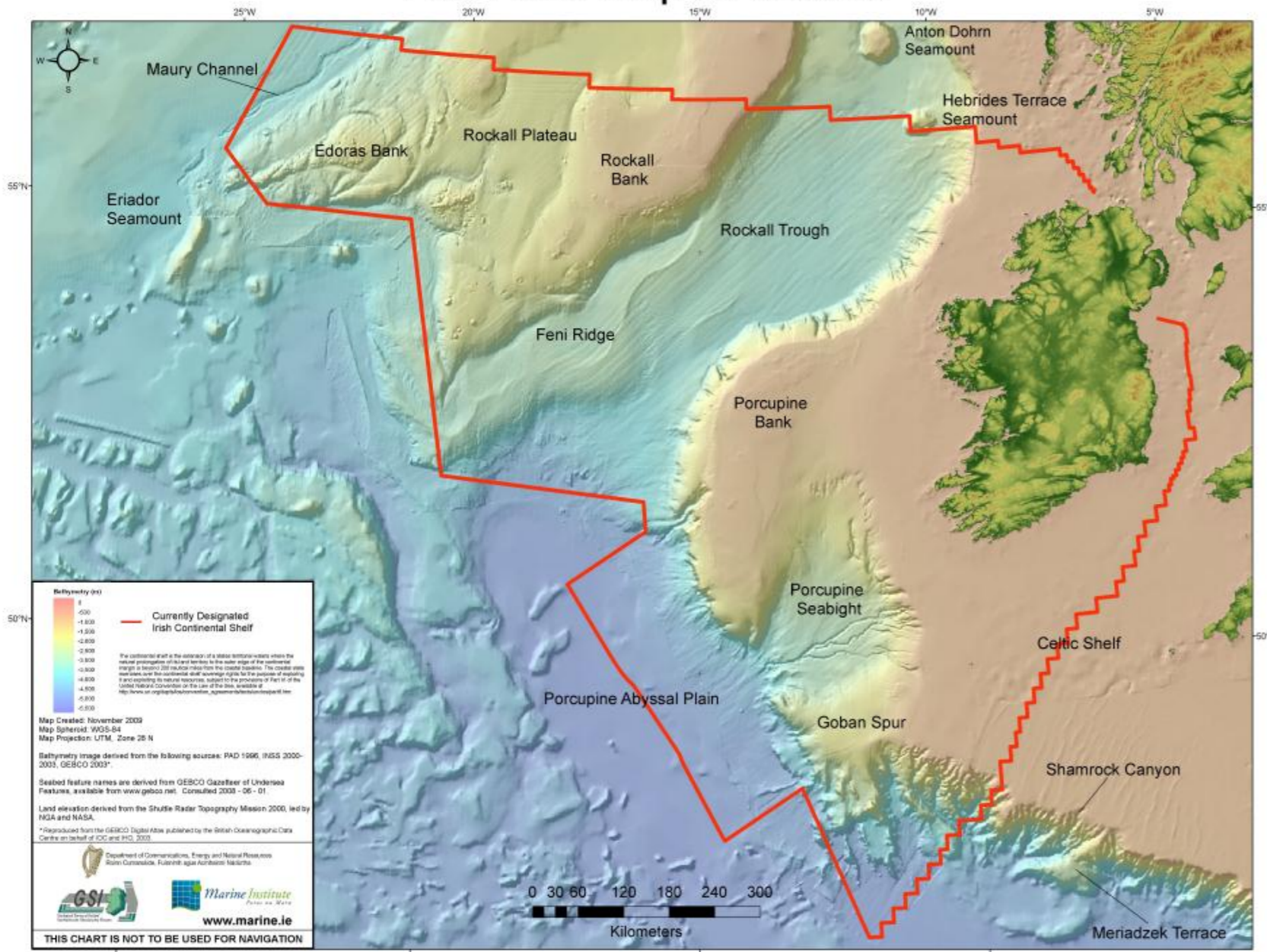
- Fisheries survey completed on behalf of Newfoundland Marine Institute off Labrador coast



Modifications/Acquisitions/Upgrades

- Celtic Explorer /Celtic Voyager changeover to NOAA SCS System for data management

The Real Map of Ireland



Scientists and crew celebrating successful vibro-coring survey!

Challenges for 2012...

- Funding issues in light of economic climate
- Intense vessel schedules..
- Fuel price Increase



Email: RV@marine.ie

Web: www.marine.ie